

Product Update: Infill Deck Upgrade

Issue date: 25/10/17

We are pleased to announce the latest upgrade to the BoSS Product range with the introduction of the new Infill Decks. Suited for use in advanced tower builds the infill decks are designed to fit effortlessly between the deck boards and create a secure assembly between each deck unit. To improve the performance of the decks wind latches have been added. The latches on the infill deck fix directly into the end of the adjacent decks, where the end caps are removed, enabling the user to position the deck securely. These upgraded components are designed for use within structures that are compliant with BS1139-6:2014.



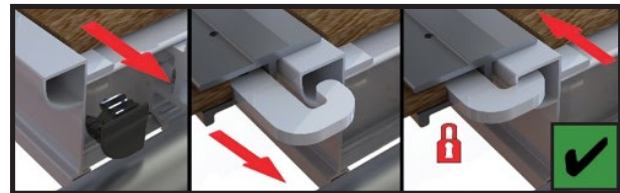
Infill Deck MK 1 - Cantilever



Infill Deck MK 2 - Cantilever



Latch Detail View



Latch Locking Detail

The upgraded versions are identifiable by the latches and are labelled as MK2 versions. There is no change to existing part numbers which are listed below. The MK1 version is now obsolete and due to compliance with new legislation we would recommend that all users upgrade their fleet to the MK2 version which is approved in BS1139:6 structures and included in our manufacturer's instruction manuals.

Component Code	Description
31351100	BoSS Cantilever Infill Deck 1.8m (L)
31451100	BoSS Cantilever Infill Deck 2.5m (L)